



BASADI-GROUP
(PTY)LTD

PRODUCT CATALOGUE



Msizi Rizza
4 IN 1

the ultimate
CEMENT PRIMER



the original
ALL IN ONE

great for
DUST CONTROL



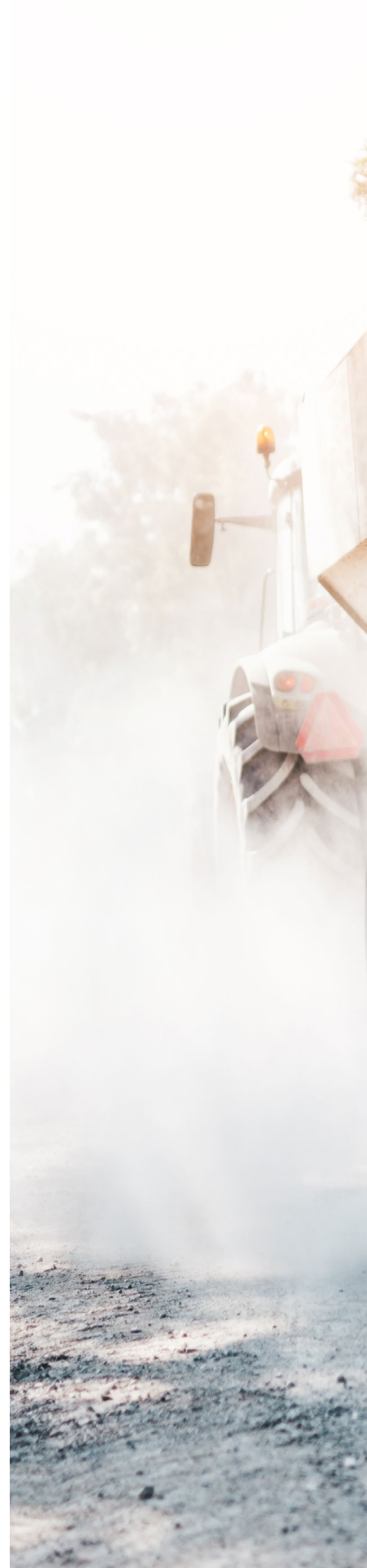
Reliable water-proofing solutions to protect your property from potential water damage. We offer a variety of smart water-proofing solutions that are designed to keep your property safe and secure. Let us help you safeguard your investment with our top-of-the-line products and services.



BASADI-GROUP
(PTY)LTD

TABLE OF CONTENTS

WHY CHOOSE US	5
INSULATION WATERPROOF SEALER	6
FIBRE BOOSTED ROOFING	10
CRACKED CEMENT VULA VALA	14
CORROSION GUARD	18
ADVANCE EPOXY	22
MOSQUITO GUARD PAINT	26
FIRE SHIELD	30
ROADMARX PAINT	32
CONTROL GLUE	36
H2O PURE PURIFICATION TABLETS	42
CONTACT DETAILS	48









WHY CHOOSE US?

WHAT MAKES OUR PRODUCT UNIQUE?

BASADI-GROUP PRODUCTS CONTAIN A TYPE OF COATING MADE FROM AN ACRYLIC POLYMER EMULSION, WHICH IS DESIGNED TO HAVE EXCELLENT ADHESIVE, ELASTIC AND PROTECTIVE PROPERTIES.

It can be applied using a spray or brush at normal temperature and dries to form a seamless membrane. This coating is highly resistant to corrosion, chemicals, and puncture damage, making it ideal for encapsulation.

It can bond to most construction materials and can withstand thermal cycling, strong UV exposure, as well as exposure to industrial chemicals.

Additionally, it has an elongation capacity of 100% with a 95% recovery rate.

OUR PRODUCTS ARE ENVIRONMENTALLY FRIENDLY, AND THEY DO NOT CONTAIN ANY TOXINS OR HARMFUL CHEMICALS.

The product is easy to pour out of the container, and it is also easy to reseal the container for storage. Compared to aluminum tins, our container is much lighter in weight, making it practical to use and easier to transport.

Additionally, our packaging looks great on the shelf, and it is optimized for transportation, requiring low investment.



ISO 9001

ISO 14001

ISO 45001



the original
ALL IN ONE

INSULATION WATERPROOF SEALER

INSULATION IS A WATERPROOFING BARRIER COATING FORMULATED ON AN ELASTOMERIC POLYMER BASE.

25 PERCENT VALUE FOR MONEY - MORE COVERAGE



PRODUCT DESCRIPTION

- Insulation Waterproof Sealer is a revolutionary pure acrylic coating renowned for its high flexibility, exceptional water resistance, rust protection, and anti-yellowing properties. Engineered with precision, its fine particle size and medium viscosity ensure remarkable UV resilience. This adaptable coating serves as a versatile solution for both priming and finishing, setting new standards for all-around waterproofing projects.

APPLICATION AREAS

- Ideal for ALL Roof Types and Structures, including:
- Fiber-Cement Roof Sheets, Cement Roof Tiles, Chromadek, Zinc Alum and AluZinc, Galvanized Iron Roof, Exterior trims such as Facias, Gutters, Window Sills, and Cement Garden Pots



5L



WARRANTY



PLEASE RECYCLE

PRODUCT BENEFITS



20L

- Exceptional Flexibility and Durability
- UV and Water Resistance
- Fading and Chalking Resistance
- User-Friendly Application, Excellent Coverage, and Rapid Drying
- Dual Application as Both a Base and Topcoat
- Seamlessly Seals Joints, Conceals Fine Cracks, and Manages Rust
- Low VOC, Solvent-Free, Non-Flammable, and Environmentally Conscious

COVERAGE

- Coverage rates depend on the porosity of the substrate or surface.
- Typically, the coverage is 4 - 6 m² per liter per application, with a 100-micron thickness per coat.
- We recommend applying two coats (1 liter = approximately 2m²).
- Allow approximately 30 minutes for touch-dry, depending on humidity.
- Drying time varies from 7 - 14 hours, depending on humidity.

SAFETY PRECAUTIONS

- Insulation Waterproof Sealer is water-based and generally safe to use.
- In case of eye contact, rinse immediately with water for 10-15 minutes and contact a physician.
- For skin contact, wash thoroughly with soap and water.
- If respiratory problems arise, move the affected person to fresh air and consult a physician.
- In case of ingestion, do not induce vomiting. Stay hydrated.
- Please note that it can be slippery when wet.
- Keep it out of reach of children.



PRODUCT DATA

PHYSICAL FORM	Thick liquid
FINISH	Semi-Matt
COLOURS	Black, Charcoal, Dark Grey, Light Grey, Brown, Terracotta, Green and White
EQUIPMENT CLEANING	Use water. Do not allow the product to dry on the equipment
SPREADING RATE	4m ² / liter (100 microns per coat). Coverage will depend on the porosity of the surface and the application method
TOUCH DRYING	± 30 minutes depending on the humidity
DRYING TIME	± 7 - 14 hours depending on humidity
THINNING	Do not thin



SURFACE PREPARATION

PRODUCT FEATURES

- Adhere to proper surface preparation steps.
- Always ensure the surface is clean from rubble, loose flakes, or dust.
- Always ensure the surface is dry before starting the application process.
- Scan the QR Code below for instructions on handling different structures and surfaces.

INSULATION WATERPROOF SEALER MEMBRANE APPLICATION

- For optimum results, ensure full coverage by applying a generous coat of **Insulation Waterproof Sealer** to the entire concrete area. Follow this by embedding the membrane and applying another coat. Finish with a final layer to guarantee full coverage. Allow a drying time of 90 minutes.

INSULATION WATERPROOF SEALER: APPLICATION WITH BRUSH OR ROLLER

- Thoroughly mix the Insulation Waterproof Sealer before and during use.
- Apply two coats with a 3-hour drying time between them. In cold, damp conditions, extend the drying time to 4 hours.
- Porous surfaces and coastal areas may necessitate a third coat for complete coverage.

APPLICATION WITH AIRLESS SPRAY

- Apply 2 coats with a 60 to 90-minute drying time between coats, dependent on the temperature
- In cold, damp conditions, extend the drying time to 4 hours.
- Porous surfaces may require a third coat for comprehensive coverage.
- To maximize spray performance, we recommend using a 521 nozzle with your airless spray machine.

ADDITIONAL PRODUCTS NEEDED

- Brushes, rollers, and paint trays.
- A bonding liquid/agent.
- Drop sheets.
- Wire brush or any other hard brush.
- High-pressure water washer.

Msizi Rizza

4 IN 1

FIBRE BOOSTED ROOFING

FIBRE BOOSTED ROOFING IS A NEW GENERATION WATER-BASED ACRYLIC ELASTIC LONG-LIFE, WATER-PROOF SEALER FOR ROOFS, WINDOW LEDGES AND PARAPET WALLS.



IMPROVED MICRONIZED INFUSED FIBRE



**LEAD
FREE**



Msizi 4-in-1 Fibre Boosted Roofing Sealer is an innovative, water-based acrylic elastic sealer designed for long-lasting waterproof protection on roofs, window ledges, and parapet walls.



PRODUCT USES

- Suitable for Exterior and Interior Surfaces
- Ideal for Cement Tiles, Fiber-Cement Sheeting (new or weathered)
- Applicable on Primed Plaster
- Works on Previously Painted Substrates
- Effective on Primed Metal and Wooden Substrates
- Perfect for Flat Cement/Concrete Roofs and Walls
- Suitable for Nail Heads, Roofing Bolts, and Roof Tile Ridges

PRODUCT ADVANTAGES

- Unmatched Waterproofing Capabilities
- Versatile Selection of Colours
- Incorporates Fibrous Particle Technology
- Offers Flexibility and Longevity
- Versatile for Repair Solutions
- Outstanding Durability and UV-Resistance
- Effortless Application and High Efficiency
- Minimal Odor with Long-Term Flexibility

COVERAGE

- Coverage may vary based on the substrate and surface porosity.
- Coverage area of approximately 2m² per liter. For uncoated surfaces, coverage may range from 0.5 - 1m² per liter.
- When applying a 2nd coat or on previously coated surfaces, coverage of 1.5 - 2m² per liter is expected.
- It is recommended to apply two coats for optimal results.
- A 3rd coat is advised for coastal areas and optimal warranty purposes.

SURFACE PRECAUTIONS

- Msizi 4-in-1 Fibre Boosted Roofing Sealer is water-based and safe to use.
- In case of eye contact, rinse immediately with water for 10-15 minutes and contact a physician.
- For skin contact, wash thoroughly with soap and water.
- If respiratory issues occur, move the affected person to fresh air immediately and consult a physician.
- Avoid inducing vomiting. Keep hydrated. Caution: It can be slippery when wet. Keep it out of reach of children.



CLEANING

- Clean equipment with water before the product is dry.
- Use suitable absorbent materials for spillage. per liter is expected.
- It is recommended to apply two coats for optimal results.

PRODUCT DATA

RESIN BASE	Acrylic resin emulsion.
DRYING TIME	Touch dry: + 1 hour. Hard dry: + 4-6 hours.
FILM THICKNESS	80-100 microns per coat.
SPREADING RATE	Black, Charcoal, Dark Grey, Light Grey, Brown, Terracotta, Green and White
COLOURS	Black, Charcoal, Dark Grey, Light Grey, Brown, Terracotta, Green and White

IMPROVED MICRONIZED INFUSED FIBRE



APPLICATION DETAILS

STIRRING	Always stir well before use with a flat paddle.
APPLICATION METHOD	Application with Brush or Roller (Recommended)
THINNING	This product is ready for use un-thinned; thinning with water will reduce its hiding power.
APPLICATION	<ul style="list-style-type: none">• With a brush or roller, apply a generous/thick coat of Msizi 4-in-1 Fibre Boosted Roofing Sealer to the area in small manageable sections.• Apply a generous 2nd and 3rd coat, with 4-6 hours between coats until the surface has a noticeable high sheen.• For optimal results and warranty purposes, use three coats. This product is ready for use un-thinned; thinning with water may reduce its ability to prevent substrate mapping.• Clean application equipment with tap water.• During wintertime, avoid applying product before 09:00 or after 16:00.• Don't start the application process if rain is expected within 4-6 hours.

APPLICATION WITH AIRLESS SPRAY MACHINE

- For optimal spray performance, use a front entry gun and a 525/531 nozzle with your airless spray machine, maintain a pressure of approximately 2200 psi, and remove filters/seals due to the presence of fibres in the product.

IMPORTANT

- Avoid applying on chalky or waned surfaces. Cannot be used for high-traffic areas. Use containers with the same batch numbers to ensure colour consistency. Must always be handled with care during transport to prevent possible damage and spills. Do NOT apply if rain is anticipated. Apply within temperatures ranging from 3°C to 30°C. For guidance, contact our Technical Helpline.

DISCLAIMER

- Basadi reserves the right to update this technical sheet without prior notice. Information herein is given in good faith. Basadi cannot be held liable for any resultant damage of whatsoever nature that may arise from the use of Basadi products.

the ultimate CEMENT PRIMER

CRACKED CEMENT *Vula Vula*

Cracked Cement Sealer is a multifunctional, water-based acrylic emulsion that simplifies surface preparation with easy brush or roller application. It deeply penetrates and dries clear, offering flexible protection that can be seamlessly coated with acrylic paint or waterproofing products such as Insulation Waterproofing Sealer, thereby ensuring seamless, water-resistant surfaces.

PRODUCT USES

- Suitable for exterior and interior surfaces.
- Ideal for fresh cement plaster.
- Perfect for retaining walls, especially for underground applications.
- Highly effective for general waterproofing and repairing hairline cracks.

PRODUCT ADVANTAGES

- Effectively seals porous surfaces.
- Binds powdery or friable surfaces.
- Adaptable to alkaline surfaces like fresh cement plaster.
- Creates a reliable waterproof barrier for underground retaining walls.
- Forms a durable film upon curing.
- Protects against moisture on plaster with over 12% moisture content, ensuring topcoat quality.

COVERAGE

- Coverage may vary depending on the substrate/surface porosity.
- Typically, it offers coverage of approximately 6 - 8 m² per liter.
- We recommend applying 2 coats for the best results.
- The surface is touched dry in approximately 1 hour.

ALKALINE SURFACE COMPATIBLE



WARRANTY



**PLEASE
RECYCLE**

BINDS POWDERY AND FRIABLE SURFACES



**LEAD
FREE**



EXCELLENT
WATERPROOFING



AVAILABLE IN 5L AND 20L



SAFETY PRECAUTIONS

- Cracked Cement Sealer is non-hazardous.
- In case of eye contact, flush immediately with water for 10-15 minutes and contact a physician.
- For skin contact, wash thoroughly with soap and water.
- If respiratory issues arise, move the affected person to fresh air immediately and consult a physician.
- Avoid inducing vomiting. Stay hydrated.
- Can be slippery when wet.
- Keep it out of reach of children.



CLEANING

- Hands and equipment are easily cleaned in water while wet.
- Collect Spills with suitable absorbent material.

APPLICATION

SURFACE PREPARATION

- Eliminate dust, oil, foreign materials, and fungal and algae growth.
- Clean the surface with water or a good degreaser.
- Apply crack filler if necessary for larger cracks and sand the area.
- Apply crack filler if necessary for larger cracks and sand the area.
- Apply the 1st coat of to create a strong bonding base and form a waterproofing film.
- If surfaces are highly porous, apply the 2nd coat to ensure thorough coverage.
- Always ensure the surface is dry before starting the application process.
- Scan the QR Code below for instructions on handling different structures and surfaces.

APPLICATION WITH BRUSH OR ROLLER

- Do not dilute the product, as it may reduce binding power.
- Apply the 1st coat for proper penetration and allow it to dry for 2 hours.
- For porous surfaces, a 2nd coat may be required.
- Ensure the surface is effectively coated to prevent moisture.

APPLICATION FOR AIRLESS SPRAY

- Do not dilute the product, as it may reduce the binding power.
- Apply the 1st coat for proper penetration and allow it to dry for 2 hours.
- For porous surfaces, a 2nd coat may be necessary.
- Ensure the surface is thoroughly coated to prevent moisture seepage.
- To optimize spray performance, use a 517 nozzle with your airless spray machine.

IMPORTANT

- Avoid applying on chalky or waned surfaces. Can be used for high-traffic areas. Must always be handled with care during transport to prevent possible damage and spills. Do NOT apply if rain is anticipated. Apply within temperatures ranging from 3°C to 30°C. For guidance, contact our Technical Helpline.



weather & chemical RESISTANCE

CORROSION GUARD

Corrosion Guard is a self-priming, two-component isocyanate cured system, which offers excellent weather- and chemical resistance, and is to be used in both industrial and decorative industries.

PRODUCT FEATURES

- Two components
- Isocyanate-cured system
- Available in Clear, White, Red Oxide, Grey and Black colours
- Self-Priming
- One coat – final coat
- UV resistant
- Hard wearing
- Rust inhibitor
- Scratch resistant
- Hydrophobic
- Nano technology
- Easy to use

PRODUCT DATA

PHYSICAL FORM	Flammable liquid containing pigments with exceptional rust resistance
FINISH	Smooth gloss finish
COLOURS	Clear, White, Red Oxide, Grey, Black
THINNING	Not recommended as it reduces the quality of the resin. If viscosity needs to be reduced, add up to 20% Xylene
STORAGE	Store at ambient temperature in sealed containers, away from direct sunlight
FLASH POINT	Highly flammable – Liquid component when exposed to open flame or spark at 37.8°C or higher. Once cured: flammable over 350°C
SPREAD RATE	Approximately 7m ² per liter per coat
DRYING PROPERTIES	Touch dry within 15 minutes – over-coating time 2-4 hours
DRY FILM THICKNESS	45µm per coat



APPLICATION



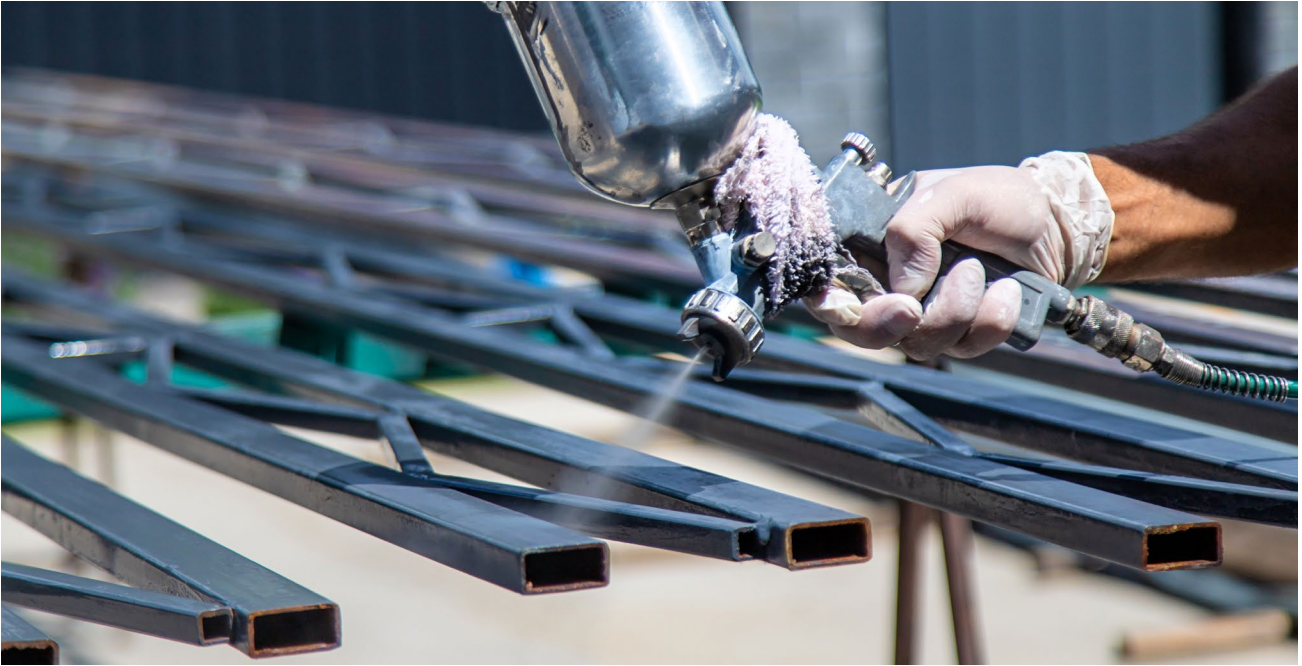
APPLICATION AREAS

- Interior & exterior use
- Metals
- Canals & Concrete Dams Drilling / Oil Rigs
- Docking Stations
- Steel Structures
- Reservoirs Storage Tanks
- Mining Shafts
- Offshore Applications Vessels
- Pipe Lining
- Sewer inspection Shafts Harbour
- Marine
- Truck Beds Sewerage



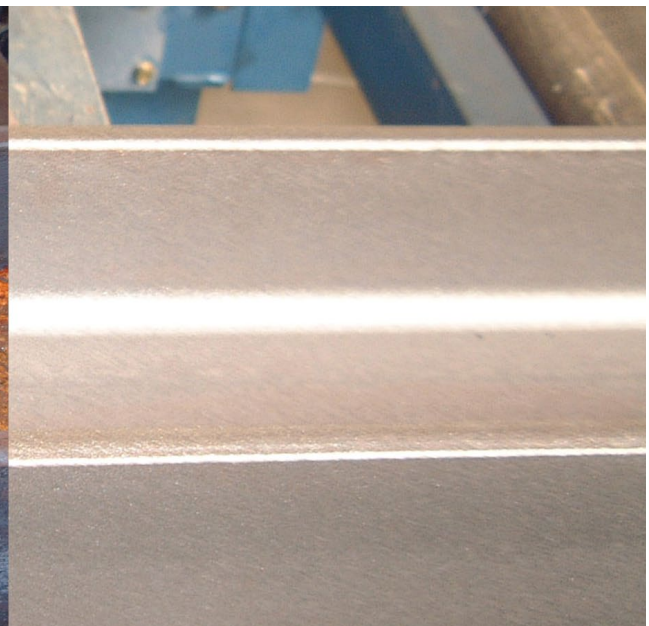
SURFACE PREPARATION (METALS)

- Remove rust
- Heavily rusted areas should be sandblasted to remove all existing paint and primed correctly – consult with agent
- Remove dust, foreign material, grease and oil
- Scrub with a hard broom or wire brush, and wash off thoroughly with clean water
- Ensure that the surface is sound and dry before applying Corrosion Guard



APPLICATION DETAILS

MIXING	Always stir well before use with a flat paddle
APPLICATION METHOD	Brush, roller or compressor spray gun
THINNING	Not recommended. This product is ready for use un-thinned
CLEANING	Application equipment clean-up is with Xylene
BRUSH OR ROLLER APPLICATION	Apply one coat of Corrosion Guard and allow to dry for 4 hours, and an Additional 6 hours in cold, wet weather Apply a second coat to ensure surface is properly coated
COMPRESSOR SPRAY GUN APPLICATION	Apply one coat of Corrosion Guard and allow to dry for 4 hours, and an Additional 6 hours in cold, wet weather Apply a second coat to ensure surface is properly coated
DRY FILM THICKNESS (DFT)	45µm per coat – recommended 90µm (2 coats)





SECONDARY PRODUCTS THAT MAY BE NEEDED

- Drop sheets
- Brushes, rollers and spray trays
- Hard brush, -broom or wire brush
- High-pressure water jet
- Bonding liquid
- Compressor spray gun

HEALTHY & SAFETY

- The Product contains a highly flammable solvent.
- Precaution must be taken to prevent naked flames from coming in contact with the vapour (i.e. smoking must be prohibited).
- Solvents may also cause narcotic effects if the vapour concentration is too high.
- Always ensure adequate ventilation (never use solvent-based products in poorly ventilated or enclosed areas.
- Avoid contact with skin, eyes, mouth, etc. Wear protective clothes, goggles and gloves.
- If body contact is made, rinse immediately. Wash Product off skin before it has dried, using thinners.



exceptional RUST RESISTANCE ADVANCE EPOXY

ADVANCE Epoxy is a self-priming two-component isocyanate cured system to be used in both industrial and decorative industries. Provides excellent weather and chemical resistance.



HIGHLY DURABLE AND UV RESISTANT



LEAD
FREE



APPLICATION AREAS

- Interior use – concrete / cement walls, wood and metal surfaces

PRODUCT FEATURES

- Two Components.
- Isocyanate cured system.
- Available in grey & oxide colours.
- Easy-application properties.
- Exceptional rust resistance.
- Self-priming.
- One coat - final coat.
- Highly durable and UV resistant.
- Highly water resistant.
- Excellent adhesion.
- Excellent, no-mess application properties.
- Quick drying - two coats can be applied in one day.

SHELF LIFE

- 6 to 12 months when stored in a cool, dry place or in a specifically constructed pumping station which is able to circulate the product correctly.
- Failure to comply with these recommendations may result in a reduction in the shelf life of the product.

PACKAGING

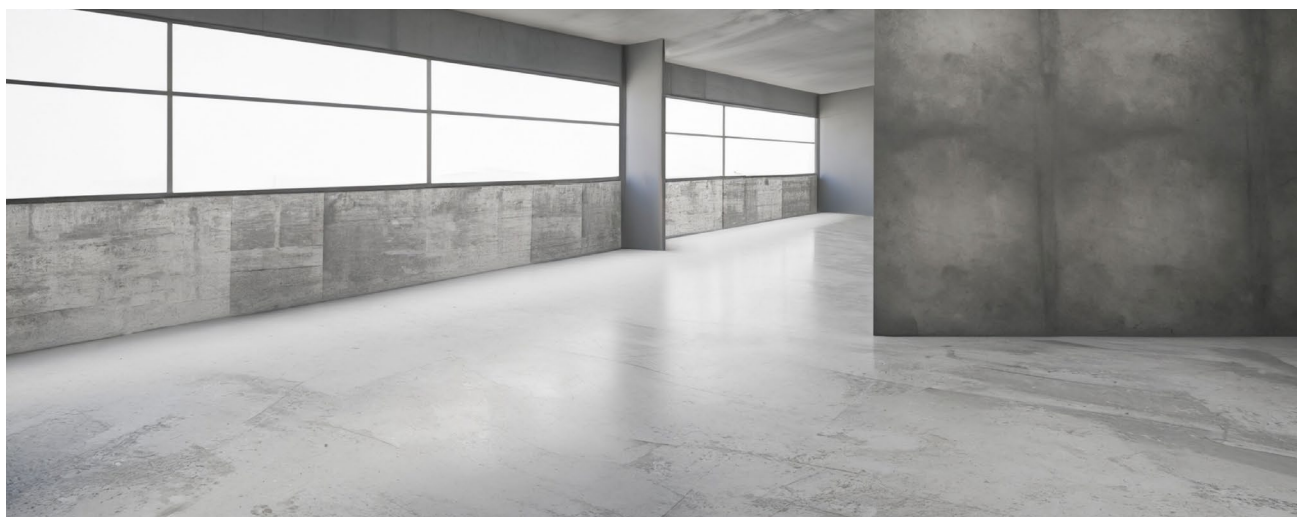
- ADVANCE Epoxy is available in 25L Kit or 5L Kit plastic drums.

PRODUCT DATA

PHYSICAL FORM	Flammable coloured liquid containing pigments with exceptional rust resistance
FINISH	Smooth, gloss finish when dry
COLOURS	White, light grey, dark grey, charcoal, black and custom colours
EQUIPMENT CLEANING	Do not allow the product to dry on equipment. Equipment is readily cleaned with Xylene
SPREADING RATE	7m ² /L application at 45µm (single application). Coverage may vary depending on surface porosity and application method
TOUCH DRYING	±15 minutes
DRYING TIME	± 7 - 14 hours depending on humidity
THINNING	Not necessary – if needed, add up to a maximum quantity (20%) of Xylene
FLASHPOINT	Highly flammable – Liquid component when exposed to open flame or spark at 37.8°C or higher. Once cured: flammable over 350°C

SAFETY & HANDLING

- This product contains a flammable solvent.
- Prevention must be taken to prevent naked flames coming in contact with vapours.
- Solvents may cause narcotic effects if vapour concentration is too high – always ensure adequate ventilation.
- Avoid contact with skin, mouth and eyes.
- If body contact is made, rinse off immediately.
- Always wear protective clothing, dust mask, gloves, eye protection and overalls when preparing surfaces and during application.
- Should the product come into contact with eyes, wash immediately with water and seek medical advice.





SURFACE PREPARATION

NATURAL STONE, CONCRETE CEMENT, PLASTER AND RAW WOOD SURFACES

- Remove dust, foreign material, fungal and algae growth with a heavy-duty degreaser and rinse thoroughly with water, then allow to dry.
- Ensure that the surface is sound and dry before painting.
- If the surface is still dusty, apply a coat of cement-primer before applying the product.

APPLICATION

- Mix well before use.
- For brush, roller or compressor spray application, apply one coat of ADVANCE Epoxy to achieve proper penetration and allow to dry for 4 hours, and an additional 6 hours in cold wet weather.
- Porous surfaces may require a second coat, ensure surface is properly coated so that the surfacem does not show through and to avoid colour patches.
- Allow to dry 4-6 hours before recoating – if second coat is required.
- This product is ready for use un-thinned; thinning with water may reduce its efficacy.
- 1 to 2 coats of this product are used for best results.

ADDITIONAL PRODUCTS NEEDED

- The information given in this Technical Data Sheet is true and accurate as on the date of issue of this document, information herein is based on controlled laboratory tests and many years of experience. It is given in good faith, but no guarantee of any performance characteristics is given or implied. Neither Basadi Group nor their Manufacturer can be held liable for consequential damage of whatsoever nature that may arise from the use of the products as mentioned herein.
- Basadi Group and its Manufacturer reserve the right to update Product Specifications without prior notice.

versatile
PROTECTIVE COATING
**MOSQUITO
GUARD PAINT**



OUR PAINT HAS THE ADDED ADVANTAGE OF AN EFFECTIVE ANTI-MOSQUITO REPELLENT MIXED INTO THE PAINT

SUITABLE FOR EXTERIOR AND INTERIOR APPLICATIONS



PRODUCT DESCRIPTION

- Mosquito Guard Paint is a cutting-edge water-borne paint designed to redefine your industrial and residential wall and roof coating experience. Crafted from an advanced Styrene Acrylic co-polymer formula, Mosquito Guard Paint boasts outstanding UV-reflective capabilities and unwavering resilience against harsh weather conditions. Say goodbye to fading and chalking, and revel in the remarkable low sheen finish that effortlessly repels dirt. Depending on climate conditions, the mosquito repellent can last up to three years.

PRODUCT USES

- Suitable for exterior and interior applications.
- Ideal for cement tiles, fiber-cement sheeting (whether new or weathered), primed plaster, and previously painted surfaces.
- Perfect for flat cement and concrete roofs, as well as walls.



PRODUCT ADVANTAGES

- Versatile protective coating that safeguards against water intrusion.
- Offers a diverse range of colours, including classic white.
- Serves as an all-around solution for decorative wall coating and roof repairs.
- Effective in sealing concrete.
- Compatible with galvanized sheeting, roofing felt, fiber cement, and graze cracking.
- Showcases exceptional durability, flexibility, and UV resistance.
- Application is a breeze with excellent adhesion and rapid drying.
- Resistant to pesticides, making it suitable for sensitive environments like hospitals and laboratories.

COVERAGE

- Coverage rates vary based on the porosity of the substrate or surface.
- Typically, it provides coverage of approximately 4 - 6 m² per liter for the first coat on uncoated new surfaces and 6 - 8 m² per liter for the second coat and on sealed or previously painted surfaces.
- It is recommended to apply two coats for optimal results.
- It is advisable to apply a third coat in coastal areas.

SAFETY PRECAUTIONS

- Mosquito Guard Paint is a water-based product, generally safe for use.
- In case of eye contact, rinse immediately with water for 10-15 minutes and contact a physician.
- When there's skin contact, wash thoroughly with soap and water.
- If respiratory problems arise, move the affected person to fresh air and consult a physician.
- In the event of ingestion, do not induce vomiting. Drink water.
- Take precautions as it can be slippery when wet.
- Keep it out of reach of children.

CLEANING

- Hands and equipment are easily cleaned in water while wet.
- Collect Spills with suitable absorbent material.



PRODUCT DATA

RESIN BASE	Acrylic resin emulsion
DRYING TIME	Touch dry: 1 hour. Hard dry: 4-6 hours
FILM THICKNESS	100-120 microns per coat (DTF)
SPREADING RATE	Normally 8 sqm per 1 liter (per coat) is achieved but will vary with the porosity and type of substrate. For uncoated new surfaces work on 4 sqm per litre for the first coat and 6-8 square meters per litre for subsequent coats. Do not exceed 4 SQM per liter when applying as a 1-coat system.



SURFACE PREPARATION

PRODUCT FEATURES

- Adhere to proper surface preparation steps.
- Always ensure the surface is clean from rubble, loose flakes, or dust.
- Always ensure the surface is dry before starting the application process.

MOSQUITO GUARD PAINT APPLICATION: APPLICATION WITH BRUSH OR ROLLER

- Stir well using a flat paddle before use.
- Apply a thick coat generously using a brush or roller on manageable sections that require protection.
- Wait for 4-6 hours before recoating.
- We recommend applying two coats for optimal results.
- For coastal areas, a third coat is advisable.
- Avoid application before 09:00 or after 16:00 in winter, and if the temperature is 12°C or lower.
- Refrain from applying when rain is expected within 4-6 hours of application.

APPLICATION WITH AIRLESS SPRAY

- For optimal spray performance, we recommend using a 517/521 nozzle with your airless spray machine.

ADDITIONAL PRODUCTS NEEDED

- Brushes, rollers, and paint trays. • A bonding liquid/agent.
- Drop sheets.
- Wire brush or any other hard brush.
- High-pressure water washer.

IMPORTANT

- Avoid applying on chalky or waned surfaces. Cannot be used for high-traffic areas. Use containers with the same batch numbers to ensure colour consistency. Must always be handled with care during transport to prevent possible damage and spills. Do NOT apply if rain is anticipated. Apply within temperatures ranging from 3°C to 30°C. For guidance, contact our Technical Helpline.

immediate PROTECTION FIRE SHIELD

THIS PRODUCT IS FIRE RETARDANT, BUT NOT FIREPROOF, FLAMES WILL CHAR THE SURFACE.

SUITABLE FOR EXTERIOR AND INTERIOR APPLICATIONS



PRODUCT DESCRIPTION

- Fire Shield is a safe, ready mixed flame retarding solution that needs no dilution.
- Ready to use directly from container and will provide immediate and positive protection against the spread of fire/flames and afterglow.
- When applied correctly, it will only char when in contact with a flame and prevent the spread of flames.
- It is quick drying, and can be applied through dipping or with a high-pressure spraygun.
- It is non-toxic and odourless
- Fire Shield is suitable for interior and exterior use, on fabrics, thatch roofs, grass and many other materials.

APPLICATION

- Thatch Roof
- Wooden Supports, beams, trusses
- Fabric and other materials



high quality ROAD COATING

ROADMARX PAINT

RoadMarx Paint is a superior high quality UV resistant direct to road coating. It is based on an acrylic copolymer emulsion. It is a high-performance water-based coating for road marking on bitumen and other surfaces.



ACRYLIC COPOLYMER EMULSION



LEAD
FREE



The product contains a flash rust inhibitor allowing for direct-to-metal application and has excellent adhesion qualities.



PRODUCT USES

- RoadMarx Paint is suitable for interior and exterior use on roads and floors.

PRODUCT ADVANTAGES

- It is quick drying, hard wearing and scratch resistant.
- Available in white, yellow, green and red.

COVERAGE

- Coverage is 8m² per liter depending on application method.
- Easy to clean off equipment with water, but once dry, a brush cleaner is recommended

PRODUCT USES

- Bitumen Road Surfaces
- Paved Parking Areas
- Sidewalks
- Floors
- School Playgrounds
- Cement / concrete surfaces

PRODUCT FEATURES

- Highly flexible.
- Water resistant.
- Excellent adhesion.
- UV resistant.
- Easy no-mess application.
- Quick-drying – 2 coats can be applied in one day.
- Direct application – no primer needed.
- Can be used as a base and top coat.

PRODUCT DATA

PHYSICAL FORM	Acrylic co-polymer
FINISH	Smooth sheen
COLOURS	White, Grey, Green, Red, Yellow, Black
THINNING	Not recommended – ready to use as is.
EQUIPMENT CLEANING	Water – do not allow the product to dry on equipment
FLASH POINT	Not applicable
SPREAD RATE	4m ² /L application at 125-150µm per coat. Coverage may vary depending on surface porosity and application method.
TOUCH DRY	+30min
MIXING	Always stir well before use with a flat paddle.

SURFACE PREPARATION (METALS)

Natural Stone, Concrete Cement, Plaster and Raw Wood Surfaces

- Remove dust, foreign material, fungal and algae growth with a heavy duty degreaser and rinse thoroughly with water, then allow to dry.
- Ensure that the surface is sound and dry before painting.
- If the surface is still dusty, apply a coat of a cement primer before applying the product.

PACKAGING

- RoadMarx Paint is available in 20L plastic drums.



APPLICATION



- Recommended thickness is 125 – 150 per applied coat – for best results 2 coats totalling 250 – 300 μm is recommended.

FOR BRUSH OR ROLLER APPLICATION

- Apply 1 or 2 coats of RoadMarx Paint at the recommended spread-rate of 4m²/L.
- Apply the first coat evenly, leave to dry for 30 to 60 minutes before applying the second coat, depending on the temperature.

FOR AIRLESS SPRAY APPLICATION

- Order the product spray-ready.
- Apply 1 or 2 coats of RoadMarx Paint at the recommended spread-rate of 4m²/L.
- Apply the first coat evenly, leave to dry for 30 to 60 minutes before applying the second coat, depending on the temperature.

SAFETY & HANDLING

- This product is non-flammable.
- Avoid contact with mouth and eyes.
- If body contact is made, rinse off immediately with water.
- Wear dust mask, gloves, eye protection and overalls when preparing surfaces and during application.
- Should the product come into contact with eyes, wash immediately with water and seek medical advice.
- 6 to 12 months when stored in a cool, dry place or in a specifically constructed pumping station which is able to circulate the product correctly.
- Failure to comply with these recommendations may result in a reduction in the shelf life of the product.

great for DUST CONTROL CONTROL GLUE

WHAT IS CONTROL GLUE

Control Glue is a self-cross-linking acrylic emulsion, used to bind and waterproof surfaces. Control Glue incorporates Nano Technology, giving a fine particle size to achieve excellent penetration into difficult substrates and performs well in highly filled systems. Control Glue offers medium flexibility with good binding and UV-resistant properties.

IMPORTANCE OF DUST SUPPRESSION

Dust suppression is important for water conservation through reduction of water truck movements, increased production efficiency, improved visibility during operations, reduced operator downtime, compliance to dust legislation and improved safety and health of workers and communities within the vicinity of mining operations.

Rapidly becoming more prominent is the effects of errant dust settling on installed solar panels and the impact thereof in energy generation of solar plants and the effects thereof in Clients' businesses.

Dust is a nuisance. Fugitive dust pollutes the air we breathe and contaminates our land and water resources. Dust is harmful to human health and safety, has a negative impact on the growth of plants, insects and animals both on land and in water. Dust can also have a negative effect on the economy of companies as excess exposure to it can result in productivity loss, sick leave and much more.



APPLICATION AREAS

- Exterior use – Construction Sites
- Road Surfaces
- Mine Tailings Storage Facilities (TSF's)

PRODUCT FEATURES

- Waterproof
- Excellent penetration
- Medium flexibility
- Good UV-resistance
- Nano Technology • Self-cross-linking to capture and bind errant dust particles

PRODUCT BENEFITS

- Fuel saving
- Odorless
- Reduce tyre-wear
- Increased personal safety
- Increased energy generation of solar installations adjacent to dirt roads
- Lower cost – less frequent maintenance applications
- Less water usage – decreased by up to 95%
- Non-hazardous, non-dangerous goods



TECHNICAL DATA

PHYSICAL FORM:	Self cross-linking Acrylic Emulsion
PACKAGING:	1000L Flow Bins / Bulk Tankers
APPEARANCE:	Milky white emulsion
MIXING:	Always stir well before use with a at paddle
APPLICATION METHOD:	Water Bower truck / trailer with spray bar and spray lance
SOLIDS:	(±1%): 35 - 47%
VISCOSITY:	¹ mPa's: 4500 ±1500
PH:	7.5 - 8.5
MFFP:	(C): 6
DENSITY:	g/cm ³ : 1.03 (1000ℓ = 1030)
ACTIVE INGREDIENT:	Emulsion Styrene / Acrylic co-Polymer
CHEMICAL NAME:	Emulsion Styrene / Acrylic co-Polymer
SYNONYMS:	Emulsion Styrene / Acrylic Latex
CHEMICAL FAMILY	Styrene / Acrylic Latex
DRYING TIME:	± 3 hours
FLASHPOINT:	Waterborne - Class 3 reproduct
THINNING:	Mix according to correct mixing ratio with tap water
EQUIPMENT CLEANING:	Clean equipment with water
TEMPERATURE:	Do not apply to surfaces below 5°C



ECO-FRIENDLY
SOLUTION



PLEASE
RECYCLE

Delivered in 1'000L Flow Bins or
30'000L Bulk Tankers



COST- EFFECTIVE



ENHANCED SAFETY



ALL WEATHER PERFORMANCE

THINNING FOR VARIOUS INITIAL APPLICATIONS

Thinning for New Road Construction Initial Application:

Mix 1 part Control Glue to 2 parts tap water

Thinning for Existing Roads Initial Application:

Mix 1 part Control Glue to 9 parts tap water

Thinning for Mining TSF Initial Application:

Mix 1 part Control Glue to 9 parts tap water

THINNING FOR VARIOUS MAINTENANCE APPLICATIONS

Thinning for Newly Constructed Roads Maintenance Applications:

Mix 1 part Control Glue concentrated to 9 parts tap water

Thinning for Existing Roads Maintenance Applications:

Mix 1 part Control Glue concentrated to 15 parts tap water

Thinning for Mining TSF Maintenance Application:

Mix 1 part Control Glue concentrated to 9 parts tap water

PRACTICAL COVERAGE & APPLICATION FREQUENCY FOR VARIOUS APPLICATIONS

PRACTICAL COVERAGE RATE: INITIAL APPLICATION (2 COATS APPLIED)

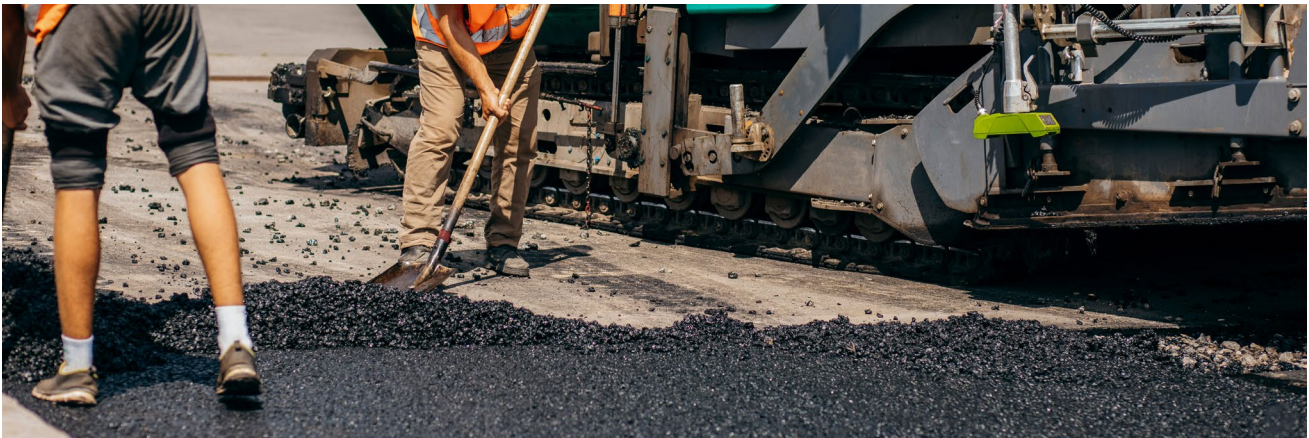
NEW ROAD CONSTRUCTION:	Mixed 1:2 with water = 3m ²
EXISTING ROAD:	Mixed 1:9 with water = 20m ²
MINE TSF:	Mixed 1:9 with water = 10m ²

PRACTICAL COVERAGE RATE: MAINTENANCE APPLICATION AND FREQUENCY (2 COATS APPLIED)

NEWLY CONSTRUCTED ROAD:	Mixed 1:9 with water = 20m ² every 2 weeks for 3 months, thereafter once per month
EXISTING ROAD:	Mixed 1:15 with water = 32m ² once every 2 weeks for 2 months, thereafter once per month
MINE TSF:	Mixed 1:9 with water = 202 every 6 months

*Maintenance Applications may be adjusted according to Product performance catering to various traffic volumes and environmental factors. Inspections should be done regularly, and adjustments (if any) made to ensure optimal performance of Control Glue.

APPLICATION DETAILS



NEW ROAD CONSTRUCTION

- Rip the area 100mm deep (Initial Application only).
- Apply water until solid moist state (Initial Application only)
- Compact with roller (Initial Application only).
- Sweep the area free of loose dust and stone debris (Maintenance Applications only).
- Apply 1 coat of mixed Control Glue mixed correctly according to project requirement.
- Leave for 3 hours.
- Apply a second coat.
- Leave for 3 hours.
- Open/reopen road for use.

APPLICATION METHOD: EXISTING ROADS DUST SUPPRESSANT

- Sweep the area free of loose dust and stone debris.
- Damp-spray area with water.
- If the area is not compacted properly, apply water until a solid moist state.
- Compact with roller.
- Apply 1 coat of mixed Control Glue mixed correctly according to project requirement.
- Leave for 3 hours.
- Apply a second coat.
- Leave for 3 hours.
- Reopen road for use.



APPLICATION: MINING TSF DUST SUPPRESSANT

- Apply 1 coat mixed CONTROL GLUE mixed correctly according to project requirement
- Leave for 3 hours
- Apply second coat
- Can be used in conjunction with wind-break netting

SECONDARY PRODUCTS YOU MAY NEED

- Water Bowser Truck / Trailer with Spray Bar and Spray Lance for Roads
- Water Bowser Trailer with angled Spray Bar, Spray Lance and Mounted Diesel Pump for TSF's
- Mechanical Ride-on or Tow-behind broom
- Grader, Roller/Compactor (if necessary)
- Pumping Station to pre-mix Concentrate with Water, circulate Product and pump into Bowser / Application Trailer (for bigger projects)

HEALTH & SAFETY

- This product is non-hazardous according to EEC criteria
- Avoid contact with eyes, in case of contact with eyes wash out with water for at least 5 minutes
- Contains no solvents – can be used with rotary pumps – to be cleaned thoroughly with water after use

WATER PURIFICATION EFFERVESCENT TABLETS

H2O PURE TABLETS

In a world where more than 1.1 billion people lack access to ‘improved’ drinking water sources, predominantly in rural areas, the grim reality persists. Annually, a staggering 4 billion cases of diarrhoea afflict communities, with over 3.5 billion instances stemming from unsafe water and inadequate sanitation, comprising 5.7% of the global disease burden. This places diarrhoea as the third leading cause of illness and the sixth highest cause of death.

With this vision in mind, **H2OPURE** was conceived to develop a distinctive product that could deliver the advantages of chlorinated water through an easy-to-use and cost-effective solution: The Effervescent Tablet. This innovation eliminates the need for costly mechanical or technically complex purification systems, rendering safe drinking water

“A SMALL TABLET THAT PACKS THE POWER TO PREVENT INFECTIOUS DISEASES”.

Through the **H2OPURE** Tablet, 1Roof Social Enterprise is unwaveringly dedicated to enhancing global health by ensuring access to safe drinking water and developing affordable disinfection solutions. These Effervescent tablets stand as guardians against waterborne diseases like cholera, typhoid, and dysentery.

OUR H2OPURE TABLETS COME IN VARIOUS SIZES, EACH TAILORED TO TREAT SPECIFIC WATER VOLUMES, FROM 25L TO 10,000L, ENSURING SAFE WATER FOR ALL.”



H2OPURE BENEFITS

H2O PURE TABLETS swiftly eliminate bacteria, reducing the risk of infectious diseases and minimizing downtime due to illness.

These tablets offer affordable chlorination, even in areas without disinfection systems.

H2OPURE TABLETS are user friendly and affordable, suitable for all, including low-income communities. With a three-year shelf life, they are dependable for emergencies and continuous use.

H2OPURE is safe for users and the environment, minimizing corrosion and hazards.



H2OPURE USAGE

Using **H2O PURE TABLETS** is straightforward. If the water appears turbid or dirty, filter it through a cloth.

Tablets come in various sizes to treat different water volumes.

No complex maintenance required; just store them safely. Protect from high heat and humidity and keep the container closed when not in use.

Suitable for portable drinking water or bulk water disinfection.

Ensures safe water with a 30-minute wait time for thorough disinfection.



H2OPURE APPLICATIONS

H2OPURE TABLETS effectively combats a broad spectrum of bacteria. Our ingredients undergo rigorous testing by top microbiology labs world-wide.

H2OPURE excels at eliminating 99.99% of harmful pathogens.

H2OPURE LOCATIONS

H2OPURE TABLETS effervescent disinfection tablets are versatile and find utility in various sectors, including health-care, education, hospitality, agriculture, entertainment, and transportation.

RECOMMENDED USE

- H2OPURE TABLETS** are available in 3 standard sizes:
- 1.25g- 40/90 Tablets per container (used for portable drinking water)
 - 3.25g- 200 Tablets per container (used for bulk disinfecting of water storage)
 - 6g- 40/120 Tablets per container (used for bulk disinfecting of water storage)

H2OPURE EFFERVESCENT

Bulk and Portable water Disinfection Application:

LITERS	TABLET SIZES		
	1.25g	3.25g	6g
25	1		
500		1	1
1000		2	1 TO 2
1500		3 TO 6	2 TO 3
2000		4	2 TO 4
3000		6	3 TO 6
5000		10	5 TO 10
10000		20	10 TO 20





BASADI-GROUP
(PTY)LTD



BASADI-GROUP
(PTY)LTD

the original
ALL IN ONE

INSULATION
WATERPROOF SEALER

25 PERCENT
VALUE FOR
MONEY
MORE COVERAGE

- SUPERIOR FLEXIBILITY & RESILIENCE
- DEFENDS AGAINST UV, WATER, FADE & CHALK
- EASY APPLICATION & OUTSTANDING COVERAGE
- VERSATILE SOLUTION FOR ALL ROOF TYPES & EXTERIOR STRUCTURES



WARRANTY



LEAD
FREE



PLEASE
RECYCLE



BIODEGRADABLE

20L



BASADI-GROUP
(PTY)LTD



CONTACT US

+013 757 0152

+27 65 928 4651 | +27 78 092 8131

info@basadigroup.com

**90 (B) Ferreira Street, Nelspruit
1200, South Africa**

www.basadigroup.com